

St Joseph's Primary School

Primary Five
Curriculum 2022-23
Ms Kitt & Mrs Hanna



Aims

- To give an overview of the Curriculum that your child will be following in P5.
- To provide an overview of the topics and activities that your child will be experiencing and learning about this year.



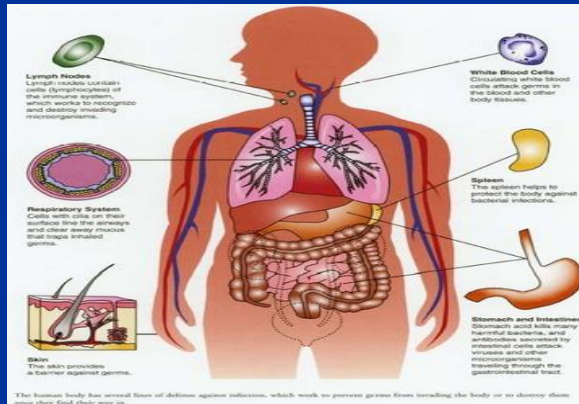
Our Topics



Animals



R,R,R



My Amazing Human Body



Egyptians

Learning Areas

- Literacy
- Numeracy
- ICT
- Connected Learning (WAU, Music, Art, Drama)
- Physical Education
- Personal Development and Mutual Understanding
- Religion



Reading

- Striving to develop a child's interest in reading.
- Shared Reading
- Guided Reading
- Independent Reading
- Developing comprehension skills
- Punctuation and Grammar
- Complete spelling programme
- Library Books - Variety of fiction/non-fiction



Writing

- Procedural – write a procedure
- Report – a factual piece on a given subject
- Narrative – a creative story.
- Explanation – explaining how something works or a process.
- Recount – writing about an event that has happened.
- Exposition – persuasive content like a letter or argument.
- Poetry
- Free Writing



Numeracy

- Number
- Measures
- Handling Data
- Shape and Space
- Problem Solving
- Investigations
- Mathletics



Mathletics

- Online learning
- Children receive points for curriculum content activities
- More points awarded for curriculum content
- Can be tailored to suit individual needs of the child
- Keeping an eye on progress
- 40 minutes p/week



Mental Maths

- Focus on using a wide range of 5 minute warm up activities, e.g. show me cards, squashy boxes
- Developing the **7 mental arithmetic strategies**
 - Counting on and back
 - Rounding and adjusting
 - Partitioning
 - Re-ordering
 - Inverse Operations
 - Using Factors*
 - Using Equivalence

ICT

- Integrated into the Curriculum areas.
- Pupils complete CCEA ICT tasks.
- iPads will allow improved curriculum integration and enhance learning.



Reporting to Parents / Assessment

- Verbal reporting to parents in October and March
- PTE,PTM (NFER) P5 June
- Written Reports in June
- Weekly mental maths and spelling assessments.
- Eight weekly class assessments



Homework

- Weekly Homework Schedule/Spellings/Homework sheets posted on Google Classroom
- Reading Books and journals
- Complete work in Homework Books (Homework Book 1 returned Wednesday/Book 2 - Friday)
- Return reading books and journals books to school on Friday (novels – extended)



Pastoral Care

- Contact class teacher immediately by telephone appointment if there are any issues or concerns
- We want your children to feel safe and happy at all times.

