

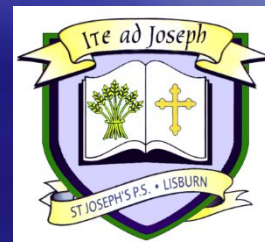
Welcome to St Joseph's Primary School



Open Days
12th and 13th January 2022

St. Joseph's Primary School

- Founded by the Sisters of the Sacred Heart of Mary
- Enrolment = 381
- Admissions number = 56
- 14 classes
- Learning Support Teachers
 - Literacy
 - Numeracy
- Happy learning environment
- A school at the heart of its local community



Mission statement

Surround ourselves with a happy, secure learning environment for all.

Join together the home, the school and the wider community.

Promote academic and cultural excellence.

Support and provide for everyone's individuality.



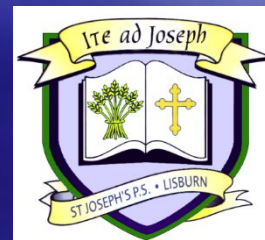
What's in your pack?

- Prospectus
- Friday Note
- Cool Kids Information
- Admissions Criteria
- Record of our academic achievement



What makes St. Joseph's different?

- ✓ A school in the heart of the community...
 - ✓ *Linen Centre*
 - ✓ *Island Arts Centre*
 - ✓ *The River Lagan*
 - ✓ *Wallace Park*
 - ✓ *Wallace Park Tennis Dome*
 - ✓ *Castle Gardens*
 - ✓ *Lisburn Racquets' Club*
 - ✓ *Salto*
 - ✓ *Amazing variety of extra curricular activities...*
 - ✓ *Miniversity, , Spanish, Dance, Speech and Drama, Coding, Netball, Football, Gaelic, Hurling, Choir, Folk Group, Cookery, Art Club*
- ✓ *Cool Kids: Wraparound Care....*
 - ✓ *8am – 9am*
 - ✓ *2pm – 5.30pm*
 - ✓ *July & August*



The little extras.....

- ✓ Buddies
- ✓ Eco Council
- ✓ Pupil Council
- ✓ Digital Leaders
- ✓ Learning Leaders
- ✓ Sustrans
- ✓ Educational Visits
- ✓ Links with local post-primary schools
- ✓ Community Relations projects with Harmony Hill Primary School
- ✓ Parent Workshops: Literacy, Numeracy and ICT



Awards and Accreditations



Our Academic Record

GL Assessment

| | January 2018 | | January 2019 | | January 2020 | |
|----------|------------------|-----|------------------|-----|------------------|-----|
| | 43 pupils sat GL | | 42 pupils sat GL | | 37 pupils sat GL | |
| Grade A | 26 pupils | 60% | 31 pupils | 74% | 27 pupils | 73% |
| Grade B1 | 5 pupils | 12% | 3 pupils | 7% | 3 pupils | 8% |
| Grade B2 | 1 pupil | 2% | 1 pupil | 2% | 3 pupils | 8% |
| Grade C1 | 5 pupils | 12% | 1 pupil | 2% | 0 pupils | 0% |
| Grade C2 | 3 pupils | 7% | 2 pupils | 5% | 3 pupils | 8% |
| Grade D | 3 pupils | 7% | 4 pupils | 10% | 1 pupil | 3% |



AQE

| January 2018 | | | January 2019 | | | January 2020 | | |
|-------------------|-----------|-----|-------------------|-----------|-----|-------------------|-----------|-----|
| 44 pupils sat AQE | | | 43 pupils sat AQE | | | 37 pupils sat AQE | | |
| 106+ | 24 pupils | 55% | 106+ | 21 pupils | 49% | 106+ | 22 pupils | 59% |
| 103 – 105 | 3 pupils | 7% | 103 – 105 | 4 pupils | 9% | 103 – 105 | 5 pupils | 14% |
| 99 – 102 | 5 pupils | 11% | 99 – 102 | 7 pupils | 16% | 99 – 102 | 2 pupils | 5% |
| 94 – 98 | 5 pupils | 11% | 94 – 98 | 2 pupils | 5% | 94 – 98 | 3 pupils | 8% |
| 88 – 93 | 2 pupils | 5% | 88 – 93 | 5 pupils | 12% | 88 – 93 | 4 pupils | 11% |
| 87 or below | 5 pupils | 11% | 87 or below | 4 pupils | 9% | 87 or below | 1 pupil | 3% |



On average over 70% Primary 7 transfer to grammar schools:
*Rathmore, Friends, Wallace, Hunterhouse, Victoria, Methody, Inst, Assumption,
 St. Mary's, Aquinas*



ETI Report February 2018

The outcomes for learners in numeracy are now good. The children talk enthusiastically about their mathematical learning.

The outcomes for learners in literacy are now very good.

The school's internal data now indicates that over 90% of the children achieve standards in literacy and numeracy as expected and higher than expected.

The children are now using ICT appropriately and making good progress across all aspects of the ICT curriculum.

The strategic and very effective leadership of the acting principal and acting vice-principal.



Criteria for selection

Children of compulsory school age who:-

- 1. Have a brother or sister, half-brother/half-sister, step brother/step sister, enrolled in St Joseph's P.S and indicate this on the application form
- 2. Have had a brother or sister, half-brother/half-sister, step brother/step sister, enrolled in St Joseph's P.S and indicate this on the application form
- 3. Are children of the current (2021/22) permanent employees of the school and indicate this on the application form
- 4. Are the eldest or only child in the family and reside in the Parish of Blaris
- 5. Reside in the Parish of Blaris
- 6. Reside outside the Parish of Blaris



Sub-Criteria for over subscription

In the event of being over-subscribed in any of the above categories, the following sub- criteria will be applied:

- Children will be admitted on the basis of the initial letter of their surname as written on their birth certificate in the order set out below:

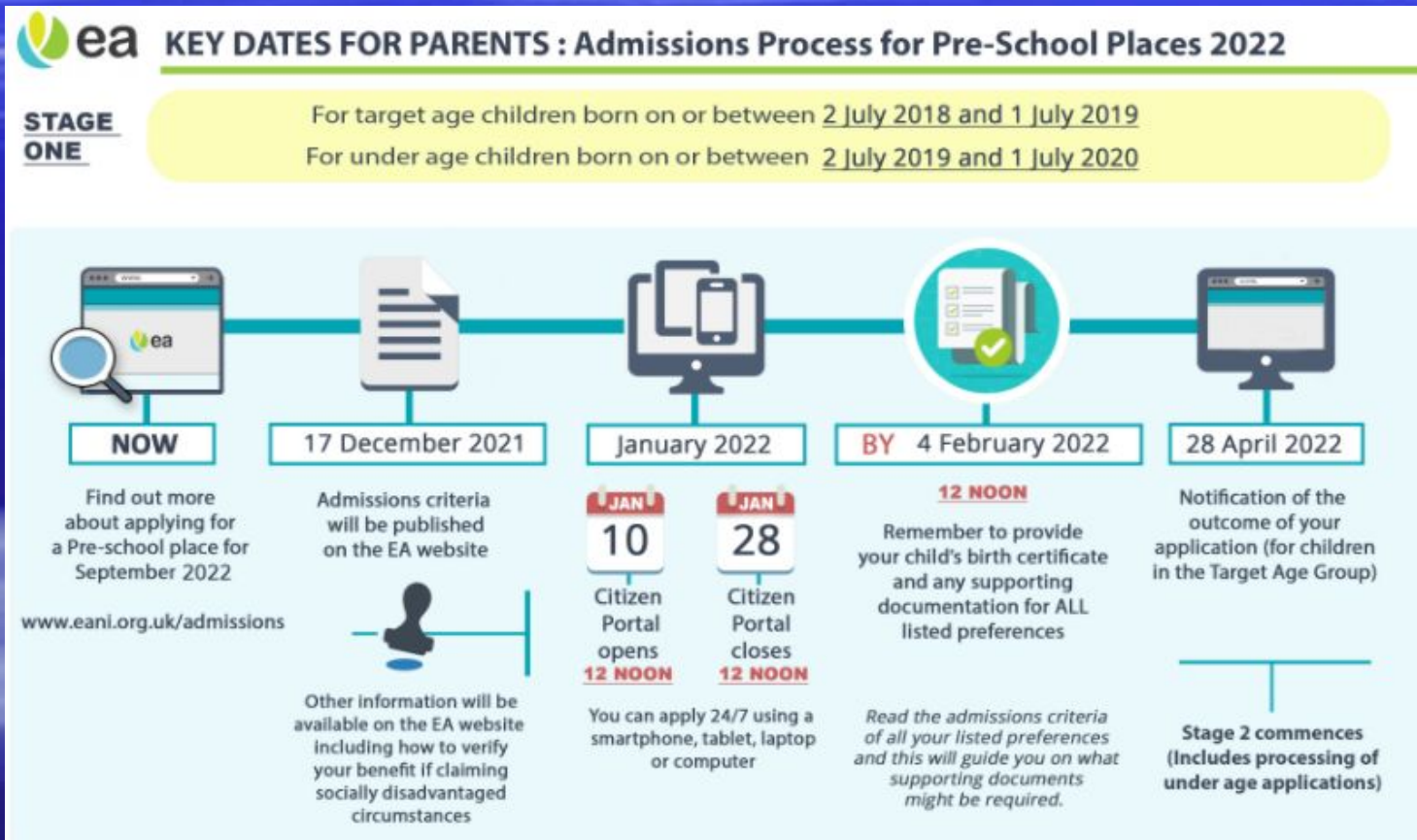
O Mac Mc B G T F D M S C W U L R Z H Q X P Y A N J E K I V

- In the event of surnames beginning with the same initial letter, as outlined above, the subsequent letters of the surname will be used in strict alphabetical order.
- In the event of two identical surnames, the alphabetical order of the initials of the forenames will be used.



Parents.....

- Online Portal information & key dates for the application process etc



A day in the life of Primary 1.....

ST. JOSEPH'S PRIMARY SCHOOL



Pupil Voice

✓ Pupil Council

✓ Eco-Council

✓ Why choose St. Joseph's?

