



St. Joseph's Primary School
42 Castle Street
Lisburn
BT274XE

'Being the best that we can be'

Friday Note

Friday 8th January

No. 17

Dear Parents,

Welcome to a brand new term!! It's not what we expected but we will do our best to adapt to the new situation. All pupils should now be set up on their remote learning platforms. If you have any issues, please let us know.

Supervised Learning

Our period of supervised learning has now begun. In order to ensure a consistent approach across the school, teachers will be freed up to concentrate on remote learning. Key points to note in the weeks ahead;

- Those pupils in school will be placed in year group bubbles and will be supervised by classroom assistants.
- ALL pupils will receive the SAME work regardless of where they are learning. I am conscious of WhatsApp and social media discussions in my own children's school claiming that being in school is better. This is careless gossip and untrue. Our ethos is always to provide equal learning opportunities for all children. The message is clear; stay at home to keep safe unless there is no other alternative.
- We look forward to seeing the work the children produce over the coming weeks and will aim to celebrate their efforts.
- We understand the difficulty parents face in juggling work commitments and home schooling. Try not to become too anxious. Keep covering the basics (reading, mental maths) and ask us for help when required.

Key worker provision

Despite the Department of Education directive on key workers, I would appeal to only those families with two key workers to book places. If our numbers become unsustainable, we will have to introduce this criteria for two key workers.

Places must be booked by **12:00 on Friday** each week. Places will not be allocated after this time.
Booking form will be sent out on Wednesday each week.

Home Learning links

Some useful home learning links were shared with us this week;

- BBC NI are publishing new Bitesize content for Primary pupils to iPlayer from next Friday 15th January. They will also be linking out to the main Bitesize pages for all year groups up to GCSE from the Learning NI page – <https://www.bbc.co.uk/learningni>
- The BBC has developed a new programme called *Outdoor Detectives* which features some local primary schools.
- PE links here - <https://www.youthsporttrust.org/coronavirus-support/>
- C2k Newsdesk is a lovely resource. It is split into junior and senior sections and can be used to keep up to date with the news of the day. There are also fact files and photos which are excellent for topic/project work.
- Be Creative at home during our remote learning. Isaac in P7 introduced us to this fabulous artist in our last period of remote learning so we think you might like him too. He's called Olaf Falafel (Do you think that's his real name?) and he has uploaded short and funny little videos to his YouTube channel. Follow the link below to have a little peek!
<https://www.youtube.com/channel/UCsscZgxhEvgPp2caT3UNODA>

The teachers will also direct you to other useful links to make learning at home more enjoyable.

Cool Kids bookings

Cool Kids places MUST be booked one week in advance by 12:00 on Friday.
Children cannot attend if they are not booked in.



**Shared
Education**

Tel: 92674901 Fax: 9262907
www.stjosephsschool.org
Twitter: @stjosephlisburn



Acting Principal: Mr Barry McMahon
Email: bcmahon827@c2kni.net

Vice Principal: Mrs Pauline Fleming
Email: pflaming930@c2kni.net



St. Joseph's Primary School
42 Castle Street
Lisburn
BT274XE

'Being the best that we can be'

Cool Kids Time change

Due to staffing considerations, Cool Kids will now be operational until **4:45pm**. We apologise for any inconvenience but it is necessary for all staff that they are off site by this time.

Trocaire

Our Eco-Council-organised sponsored walk before Christmas raised an amazing £1539.35. Well done to our Eco-Council for their brilliant idea and excellent planning and thank you to everyone who donated.

P1 admissions

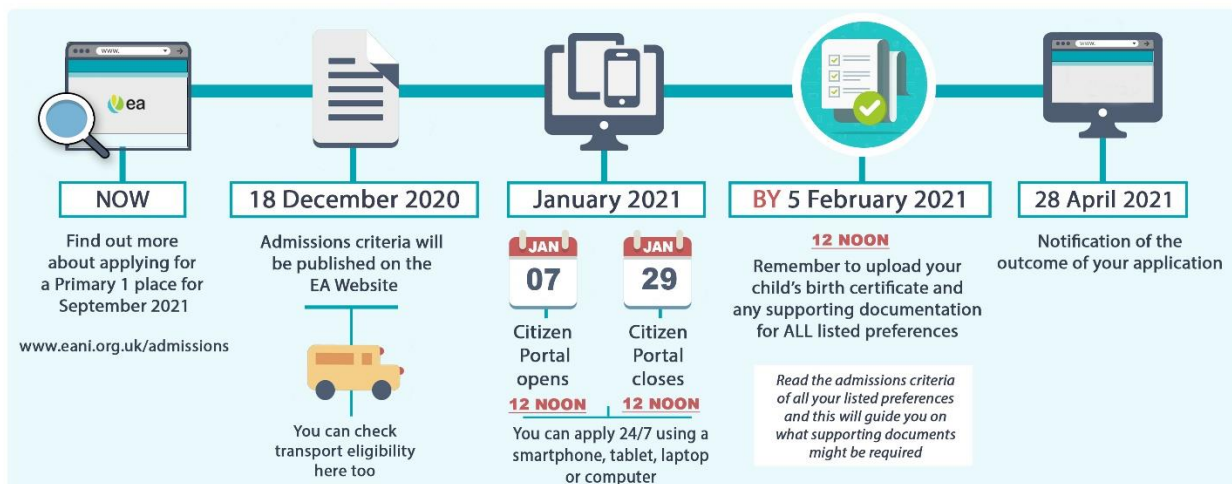
The registration portal for registering your child for nursery or primary school is now open on the EA website – <https://www.eani.org.uk/parents/admissions/applying-for-a-school-place>

All information and links can also be found on our website - <https://www.stjosephsschool.org/p1/>

ea KEY DATES FOR PARENTS : Admissions Process for Primary One Places 2021

Children born on or between 2 July 2016 and 1 July 2017 will have reached compulsory school age in September 2021

Children born on or between 2 July 2017 and 1 July 2018 can apply for a place in a reception class



The following link will also talk you through the process.

<https://www.eani.org.uk/parents/admissions>

I wish you luck in the coming weeks. These are stressful times but we must do all that we can to shield our children from anxiety. Lack of face to face teaching is a set back but we can fix it. We will fix it!

Our children will continue to grow and thrive so long as they know they are loved and supported. They have many years of high-quality learning ahead of them, in primary, post-primary and beyond.

Barry McMahon
Acting Principal



Shared Education

Tel: 92674901 Fax: 9262907
www.stjosephsschool.org
Twitter: @stjosephlisburn



Acting Principal: Mr Barry McMahon
Email: bcmahon827@c2kni.net

Vice Principal: Mrs Pauline Fleming
Email: pfleming930@c2kni.net