



St. Joseph's Primary School  
42 Castle Street  
Lisburn  
BT274XE

*'Being the best that we can be'*

## Friday Note

Friday 15<sup>th</sup> January

No. 18

Dear Parents,

Well, that was a busy first full week. I hope that things have been going well at all the various new home-school institutions around Lisburn!

I have been looking through some of the work our children have been doing and I am really impressed. Such independence and discipline and creativity! If our children can hold onto these three qualities throughout their educational journeys, then they will be well placed to fulfil their potential.

### Key worker provision

I make no apologies for appealing and repeating the message, stay at home to stay safe.

**If an adult is available at home, children should not be in school.**

### Classroom Assistants

Our school just wouldn't be the same without the dedication and commitment of our classroom assistants. Their child-centred approach has struck me from the start and I am sure the children are really missing them. At this time, I wish to thank them for their key role in keeping our school open for key workers.

### Cool Kids bookings

Cool Kids places **MUST** be booked one week in advance by 12:00 each Friday.

Children cannot attend if they are not booked in.

### Music

The school is quiet without the sound of music... we would love to feature a child a week singing a song or playing their instrument.

Please email [nohare525@c2kni.net](mailto:nohare525@c2kni.net) with your performance. We will start with P7 and work our way down the school.

Our first performance is by Sarah Duffy (Mrs Fleming's class). Sarah's performance will be on our website later this morning.

Thank you, Sarah! What a lovely way to see in the weekend.

### Message from Lisburn Foodbank

Hi all,

I hope you are keeping well amongst the new restrictions.

We just want to remind you that the Foodbank is still open and able to support your families. Our criteria is very simple, anyone who is struggling to make ends meet financially can contact us and get a food parcel.

Our opening hours are 11am - 1pm Monday, Tuesday, Thursday & Friday but they can phone any morning between 930am - 12pm to speak to one of our team and ask for support. We are fortunate to also have been offered some fresh fruit & veg and potentially even some fresh meat over the current lockdown period to ensure families are able to get access to healthy meal choices especially with the kids being home (this is limited to end of March).

Please feel free to put our details in your weekly newsletters or on your social media pages so families know how to access a food parcel.

Foodbank contact details :

Phone 07756965868 between 930am - 12pm Monday - Friday to find out how to access a food parcel or email :

[team@lisburnfoodbank.org](mailto:team@lisburnfoodbank.org)

Criteria for accessing support : Anyone who is struggling financially can access a one off food parcel. (Longer term support options are available)

Many Thanks

Lynsey & team



**Shared  
Education**

Tel: 92674901 Fax: 9262907

[www.stjosephsschool.org](http://www.stjosephsschool.org)

Twitter: @stjosephlisburn



Acting Principal: Mr Barry McMahon  
Email: [bcmahon827@c2kni.net](mailto:bcmahon827@c2kni.net)

Vice Principal: Mrs Pauline Fleming  
Email: [pfleming930@c2kni.net](mailto:pfleming930@c2kni.net)



St. Joseph's Primary School  
42 Castle Street  
Lisburn  
BT274XE

*'Being the best that we can be'*

### P1 admissions

The registration portal for registering your child for nursery or primary school is now open on the EA website – <https://www.eani.org.uk/parents/admissions/applying-for-a-school-place>

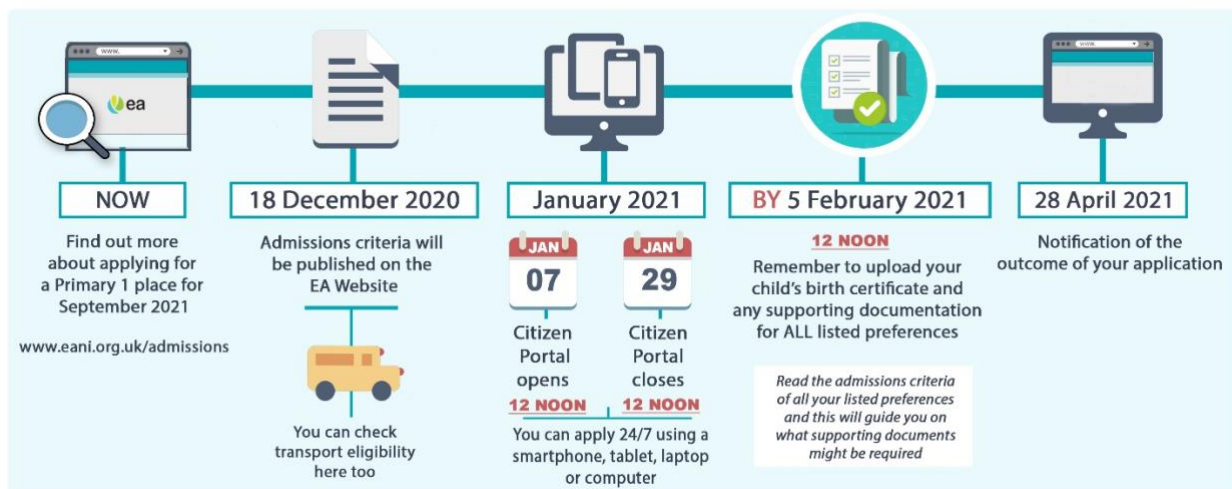
All information and links can also be found on our website - <https://www.stjosephsschool.org/p1/>



### KEY DATES FOR PARENTS : Admissions Process for Primary One Places 2021

Children born on or between 2 July 2016 and 1 July 2017 will have reached compulsory school age in September 2021

Children born on or between 2 July 2017 and 1 July 2018 can apply for a place in a reception class



The following link will also talk you through the process.

<https://www.eani.org.uk/parents/admissions>

### Promotional video

The final edit has arrived! We are delighted to share this celebration of our wonderful school. The smiling faces throughout this video capture the very essence of St Joseph's.

A huge thank you is owed to Mrs McManus who oversaw so many elements of this project. A huge thanks also to Ashley Moses from Carcosa Films who filmed and edited this production.

[St. Joseph's Final.mp4](#)

*I hope you can all take some time to relax this weekend. The hot chocolate seemed to go down a treat last weekend...it's important to reward the little achievements! Have a good one!*

Barry McMahon  
Acting Principal



**Shared Education**

Tel: 92674901 Fax: 9262907

[www.stjosephsschool.org](http://www.stjosephsschool.org)

Twitter: @stjosephlisburn



Acting Principal: Mr Barry McMahon  
Email: [bcmahon827@c2kni.net](mailto:bcmahon827@c2kni.net)

Vice Principal: Mrs Pauline Fleming  
Email: [pfleming930@c2kni.net](mailto:pfleming930@c2kni.net)